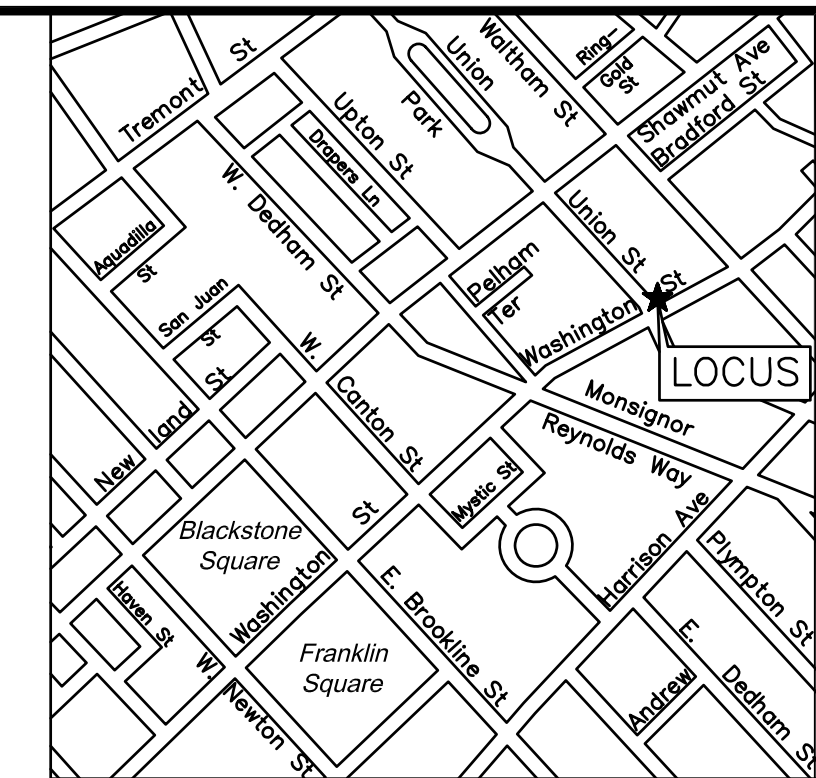
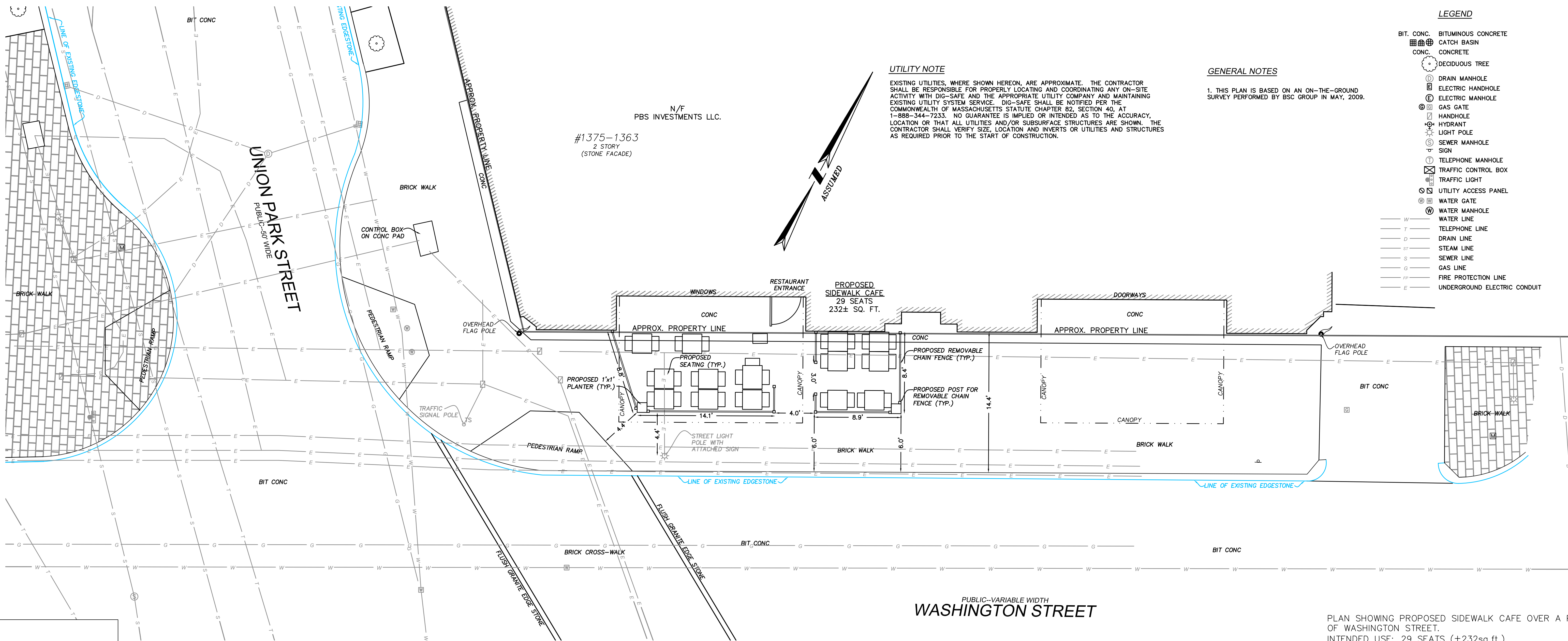


ELEVATION  
SCALE: NONE



Locus Map  
(NOT TO SCALE)



**UTILITY NOTE**

EXISTING UTILITIES, WHERE SHOWN HEREON, ARE APPROXIMATE. THE CONTRACTOR SHALL BE RESPONSIBLE FOR PROPERLY LOCATING AND COORDINATING ANY ON-SITE ACTIVITY WITH DIG-SAFE AND THE APPROPRIATE UTILITY COMPANY AND MAINTAINING EXISTING UTILITY SYSTEM SERVICE. DIG-SAFE SHALL BE NOTIFIED PER THE COMMONWEALTH OF MASSACHUSETTS STATUTE CHAPTER 82, SECTION 40, AT 1-888-344-7233. NO GUARANTEE IS IMPLIED OR INTENDED AS TO THE ACCURACY, LOCATION OR THAT ALL UTILITIES AND/OR SUBSURFACE STRUCTURES ARE SHOWN. THE CONTRACTOR SHALL VERIFY SIZE, LOCATION AND INVERTS OR UTILITIES AND STRUCTURES AS REQUIRED PRIOR TO THE START OF CONSTRUCTION.

**GENERAL NOTES**

1. THIS PLAN IS BASED ON AN ON-THE-GROUND SURVEY PERFORMED BY BSC GROUP IN MAY, 2009.

**LEGEND**

- BIT. CONC. BITUMINOUS CONCRETE
- CATCH BASIN
- CONC. CONCRETE
- DECIDUOUS TREE
- DRAIN MANHOLE
- ELECTRIC HANDHOLE
- ELECTRIC MANHOLE
- GAS GATE
- HANDHOLE
- HYDRANT
- LIGHT POLE
- SEWER MANHOLE
- SIGN
- TELEPHONE MANHOLE
- TRAFFIC CONTROL BOX
- TRAFFIC LIGHT
- UTILITY ACCESS PANEL
- WATER GATE
- WATER MANHOLE
- WATER LINE
- TELEPHONE LINE
- DRAIN LINE
- STEAM LINE
- SEWER LINE
- GAS LINE
- FIRE PROTECTION LINE
- UNDERGROUND ELECTRIC CONDUIT

PUBLIC-VARIABLE WIDTH  
**WASHINGTON STREET**

PLAN SHOWING PROPOSED SIDEWALK CAFE OVER A PORTION OF WASHINGTON STREET.  
INTENDED USE: 29 SEATS (±232sq.ft.)

APPROVED:

PUBLIC IMPROVEMENT DESIGN REVIEW

COMMISSIONER OF PUBLIC WORKS

PUBLIC IMPROVEMENT COMMISSION

PREPARED BY:



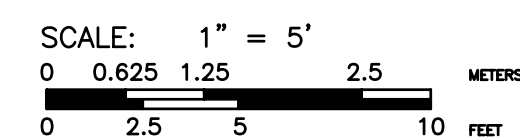
COMPUTED BY: DJR PROJECT: 1-3316.00  
DRAWN BY: DJR DWG NO: 3900  
CHECKED BY: SME FILED: FF-24

CITY OF BOSTON PUBLIC WORKS DEPARTMENT  
ENGINEERING DIVISION  
SIDEWALK CAFE LICENSE PLAN

1375 WASHINGTON STREET

BOSTON PROPER

DATE: MAY 29, 2009  
REVISED: JULY 27, 2009



DIVISION ENGINEER

CHECKED FOR GENERAL DESIGN AND CONFORMITY TO CITY STANDARDS

PUBLIC WORKS DEPARTMENT

CHIEF ENGINEER

REGISTERED LAND SURVEYOR  
FOR BSC GROUP, INC.

DATE